

# THE HANDBAG FACTORY

---

Venue hire for exhibitions,  
creative events, and special  
projects.

[handbagfactory.org](http://handbagfactory.org)  
3 Loughborough Street, London SE11 5RB

  
ARTISTS STUDIO CO.



THE HANDBAG FACTORY

3

BANHAM

# ABOUT

*3 Loughborough Street, London, SE11 5RB*

*[handbagfactory.org](http://handbagfactory.org)*

*020 7274 7474*

*Charity Registration: 1045067*

Since 1995, London-based charity Artists' Studio Company (ASC) has supported artists, makers and creatives across the capital through the provision of affordable workspaces and cultural programming.

We are proud to have worked with many councils, developers, leading arts universities, and other creative partners through our charitable activities. To date, we have managed over 23 buildings across London and supported thousands of artists in their creative journeys.

ASC has always held a strong support for innovative contemporary art that explores new boundaries. We showcase emerging and talented artists at all stages of their careers: within ASC's curated gallery programme, through creative events and partnerships, or in self-run artist projects across our studio project spaces.

In our recently-opened creative venue in Vauxhall, The Handbag Factory, ASC looks to maintain this vision through the addition of new galleries. These are available to hire and provide space to present ambitious creative projects.

# THE HANDBAG FACTORY

In the 1990s, a disused factory building was developed into a contemporary art space by renowned gallerist David Gill. Both floors acted as an expansive gallery, exhibiting bold modern art and design until 2019.

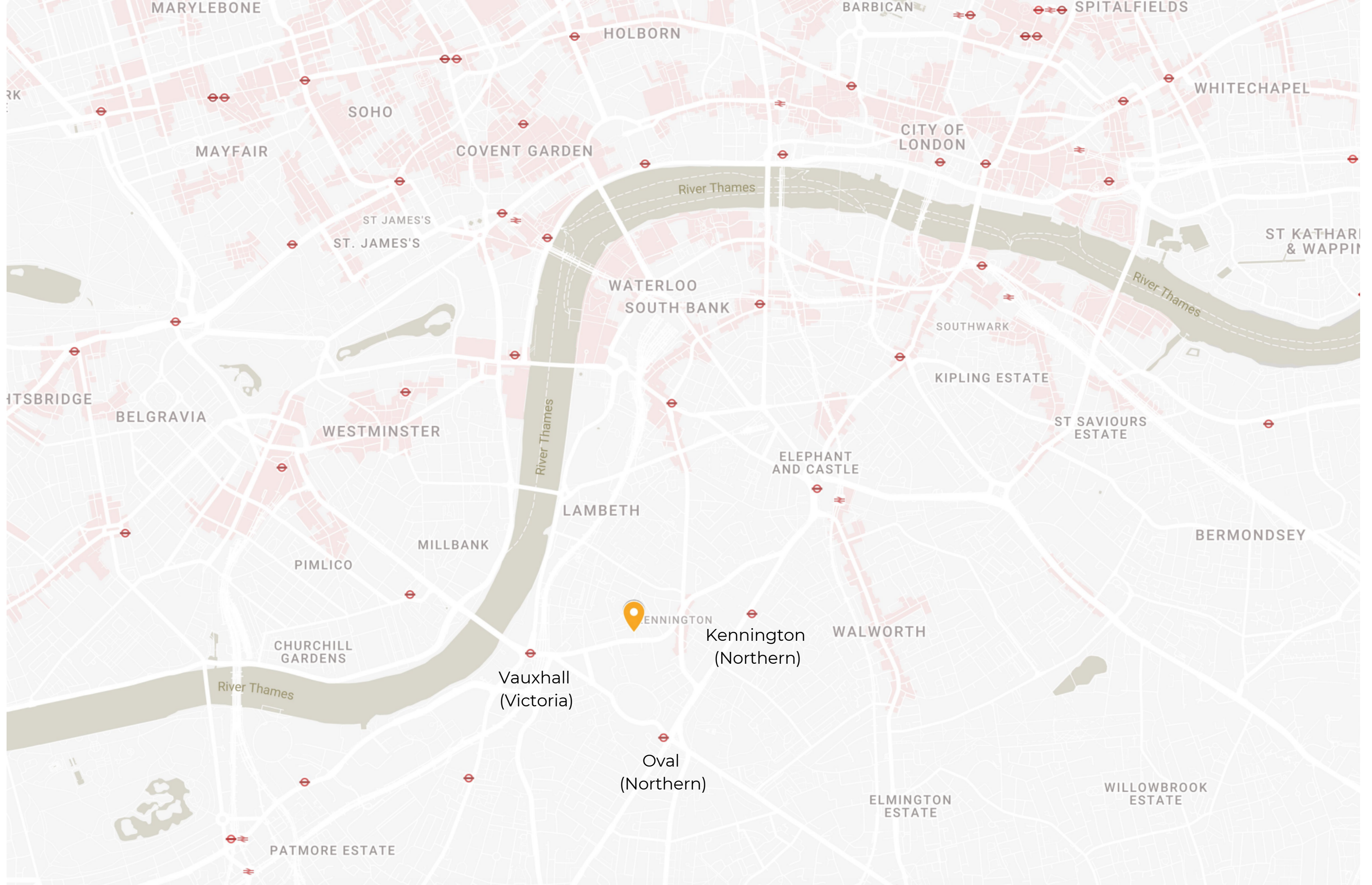
In 2023, ASC came on board to manage the building. It soon became the ASC headquarters, with the second floor transformed into a coworking hub for creative and cultural businesses. The ground floor now consists of three gallery spaces, which neighbour printmaking facilities and desks run by Bainbridge Print Studios.

With steel-framed windows and tall ceilings, the building still evokes its industrial history. A number of design features integrated by Gill can be seen throughout the venue.

The Handbag Factory forms part of a creative hub that stretches across Vauxhall and surrounding Lambeth. Just minutes from the venue you can find international residency studios and gallery Gasworks, artist-run exhibition space Beaconsfield Gallery, Damien Hirst's Newport Street Gallery, and Cabinet Gallery.



Group exhibition opening, 'Marsuppium'.  
November 2023, Gallery 1.



MARYLEBONE

HOLBORN

BARBICAN

SPITALFIELDS

SOHO

COVENT GARDEN

CITY OF LONDON

WHITECHAPEL

MAYFAIR

ST JAMES'S  
ST. JAMES'S

River Thames

ST KATHARINE  
& WAPPING

WATERLOO  
SOUTH BANK

River Thames

SOUTHWARK

KIPLING ESTATE

ST SAVIOURS  
ESTATE

HITSBRIDGE

BELGRAVIA

WESTMINSTER

River Thames

ELEPHANT  
AND CASTLE

BERMONDSEY

LAMBETH

MILLBANK

PIMLICO



KENNINGTON

Kennington  
(Northern)

WALWORTH

CHURCHILL  
GARDENS

Vauxhall  
(Victoria)

Oval  
(Northern)

River Thames

ELMINGTON  
ESTATE

WILLOWBROOK  
ESTATE

PATMORE ESTATE



Group exhibition opening, 'Marsuppium'.  
November 2023, Gallery 1.

# HOSTING CREATIVE EVENTS

By hiring The Handbag Factory for your event, you will not only become part of the area's wider creative story, but also contribute to the charity's mission to provide affordable workspaces to artists and makers.

The Handbag Factory offers two blank canvas gallery spaces, available to hire for a number of creative events. Alongside these spaces sits the ASC Gallery, which exhibits a curated rolling programme of contemporary art.

The Handbag Factory can accommodate events including, but not limited to:

- Individual and group exhibitions
- Degree, interim and MA student shows
- Art fairs and prizes
- Charity auctions
- Book launches
- Conferences and corporate events
- Private collections
- Brand activations, product and brand showcases
- Fashion shows
- Travelling exhibitions



Contemporary printmaking prize and fair, 'Bainbridge Open'. June 2023, Gallery 1.



Contemporary printmaking prize and fair, 'Bainbridge Open'. June 2023, Gallery 1.



# SUPPORT & PLANNING

With over 30 years of experience hosting exhibitions and artistic events, our team is ready to discuss ideas and support your event at every step of the process.

For all enquiries we offer an in-person or virtual visit of the space. Our gallery specialists can then discuss the scope of your project, coordinate plans, and offer curatorial advice if needed.

We offer a dedicated gallery technician to assist with installation and takedown of your event, as well as private views or special events during your booking period. Our Gallery Director will be on hand to support the curation of the event. ASC will also promote your event to our mailing list of over 4,000 recipients.

If booking for one week or longer, we offer one free private view or special event running from 6 - 9pm. These include the use of our lounge break-out area and private outdoor patio area.

Gallery 1 and 2 weekly bookings typically run from Wednesday to Tuesday, to accommodate a private view on Thursday or Friday.

## **What is the minimum and maximum hire length?**

The Handbag Factory can be hired from one day (inclusive of installation and takedown) up to several months.

## **What sort of events can you host?**

We welcome all kinds of creative and commercial events and projects within our galleries. Our team is happy to discuss unique proposals and work through your requirements. However, due to ASC's charitable status, we cannot host any events of an overtly political nature or that promote a specific political viewpoint. All enquiries are subject to review by ASC.

## **Do you provide furniture or equipment?**

We can provide tables, chairs, video conferencing equipment up to a certain number. Please discuss with the team if you have specific requirements. We may not always be able to accommodate furniture requests but organisers are welcome to bring their own.

## **Is there disabled access and toilets in the building?**

Yes, the main entrance is at ground level and we have permanent ramp access into Gallery 1 and can accommodate ramp access into Gallery 2. There is a wheelchair-accessible toilet on the ground floor.

## **Do you provide secure storage?**

Yes, we have small lockable storage spaces. We can also provide larger storage areas upon request.

## **Do you provide food and drinks / can guests bring their own food and drinks?**

ASC can provide a bar and drinks at additional cost. We are also happy for hosts to organise their own food and drinks in the venue. We do not have a list of approved vendors. The Handbag Factory does not hold a premises license so drinks cannot be sold at events. See 'Amenities, Facilities, Additions' for more details.

## **How do wall hangings work in your venue?**

Organisers are allowed to hang works directly on walls, dependent on the gallery space, and as long as the walls are 'made good' following the event. There is also wire hanging available or we can provide exhibition modular partitioning.

# GALLERY OVERVIEW

## Gallery 1

Dimensions: 11m x 11m

a: 3.8m

b: 5.5m (to door)

c: 2.2m x 1.8m

Wall Height: 4m

1835 sq ft

Standing capacity 500

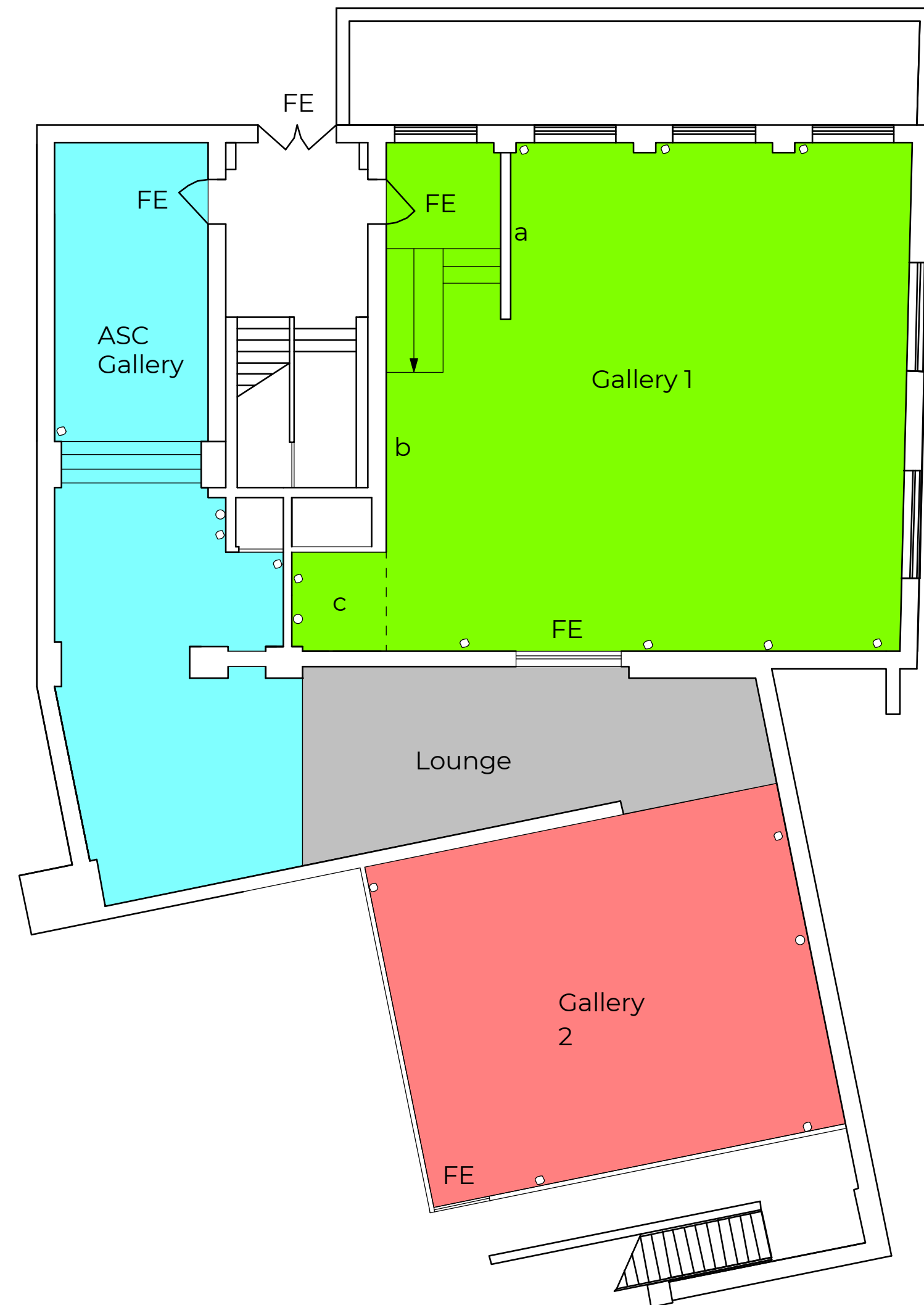
## Gallery 2

Dimensions: 7m x 9.6m

Wall Height: 3m

800 sq ft

Standing capacity 350



- Electrical Outlet
- FE Fire Exit

# RATES

Please email [handbagfactory@ascstudios.co.uk](mailto:handbagfactory@ascstudios.co.uk) with details of your proposed event, or [enquire](#) on our website, for pricing.

Hire spaces are offered at flexible rates throughout the year.

Any events running past 10pm (including deinstallation) will incur an additional day to the booking.

As a charity we do not charge VAT.

For special events running longer than one week, we can offer all three gallery spaces (ASC Gallery inclusive) for hire.

We can able to offer flexible and bespoke rates to charities, educational institutions, and students.

# AMENITIES, FACILITIES, ADDITIONS

## Amenities & facilities:

Exhibition modular partitioning

Tables (max. 10), chairs (max. 50) and other furniture available upon request

Separate hospitality and break-out area for private views and events

Private outdoor patio area for private views

Air conditioning and heating

3 phase electricity and multiple plug points

One private view evening with door security included

Gallery technician and curator to support install and takedown

Mail-out to newsletter with 4,000+ recipients

Website and social media promotion

Large access doors

Full disability access

Kitchen with fridge, tea, coffee

## Additional costs:

*All additional services are costed when booking enquiry is made.*

Private view bar staff

Private view bar set-up with drinks and food

Invigilation

Additional PV or event

Application for temporary event license to sell alcohol (at ASC's discretion)

Expert fine art transportation by ASC

Additional furniture or equipment

# CONTACT & NEXT STEPS

To enquire about dates or plan an event at The Handbag Factory, please submit an event proposal at the link below:

[Submit an event proposal](#)

For any additional details, or to discuss your event requirements, kindly contact:

Helen Dixon  
Artist Liaison & Lettings Manager

handbagfactory@ascstudios.co.uk  
020 7274 7474

THE  
HANDBAG  
FACTORY

